

## B-scan ultrasound of nanophthalmic eye

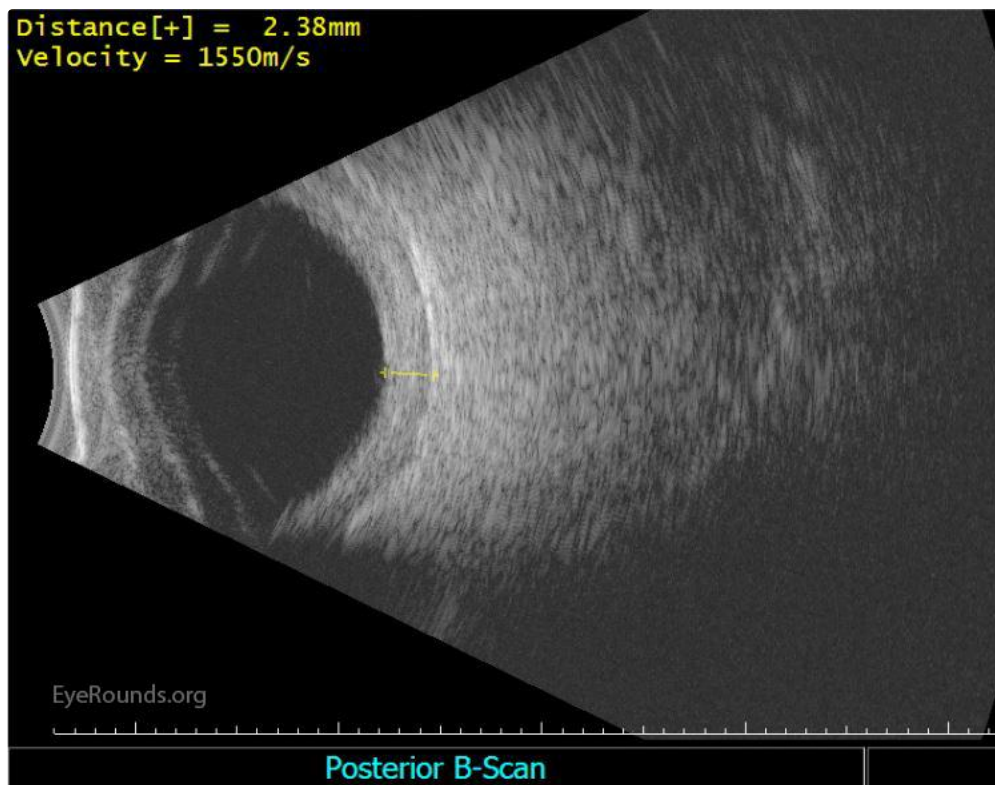
Category(ies): Retina, Vitreous

Contributor: [Luke Lenci, MD](#)

Photographer: Laura Fuhrmeister



Nanophthalmos is a congenital condition in which there is a small eye with a thickened sclera and normal-sized lens. This patient with nanophthalmos presented with mature cataracts in both eyes and had a refractive error of +13.00 D. During her evaluation for cataract extraction, the patient's axial eye length was found to be 17.14 mm OD and 17.04 mm OS. She had normal-sized lenses which were large relative to her small eyes. As one can see in the B-scan ultrasound, her sclera is almost 2.4 mm thick. For surgical planning, the decision was made to use piggyback intraocular lens implants to meet her refractive requirements and prophylactic scleral windows to reduce the risk of choroidal effusion.



[Enlarge](#)

[Download](#)

### Image Permissions:



Ophthalmic Atlas Images by [EyeRounds.org, The University of Iowa](#) are licensed under a [Creative Commons Attribution-NonCommercial-NoDerivs 3.0 Unported License](#).

---

## Address

University of Iowa  
Roy J. and Lucille A. Carver College  
of Medicine  
Department of Ophthalmology and  
Visual Sciences  
200 Hawkins Drive  
Iowa City, IA 52242

[Support Us](#)

## Legal

Copyright © 2019 The University of  
Iowa. All Rights Reserved  
[Report an issue with this page](#)  
[Web Privacy Policy](#) |  
[Nondiscrimination Statement](#)

## Related Links

[Cataract Surgery for Greenhorns](#)  
[EyeTransillumination](#)  
[Gonioscopy.org](#)  
[Iowa Glaucoma Curriculum](#)  
[Iowa Wet Lab](#)  
[Patient Information](#)  
[Stone Rounds](#)  
[The Best Hits Bookshelf](#)

## EyeRounds Social Media

Follow



Receive notification of new cases,  
[sign up here](#)  
[Contact Us](#)  
[Submit a Suggestion](#)